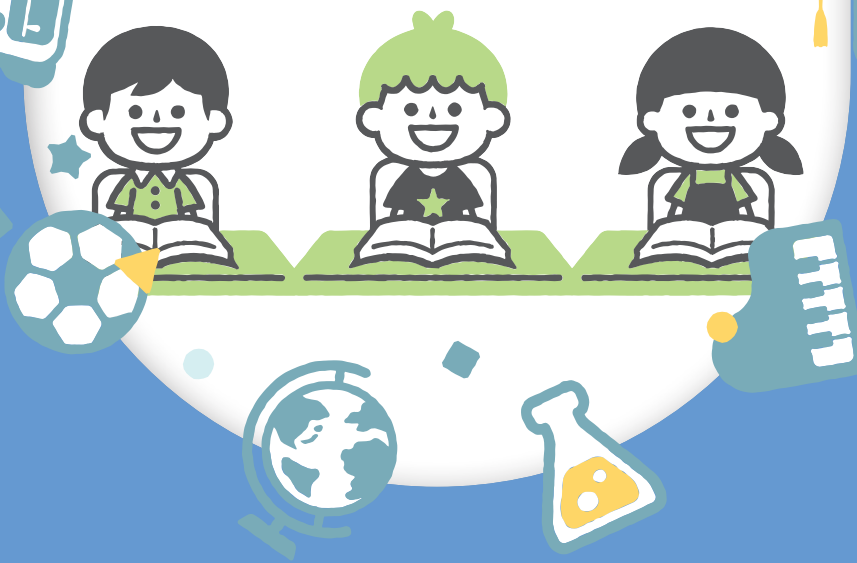


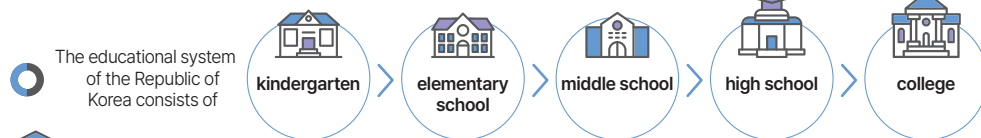
School Entrance Information for
Multicultural Parents

How to Start School in Korea



School education of the Republic of Korea

Educational system of the Republic of Korea



Education period and age

Curriculum	Name	Years	Age	Notes
Childhood education	Kindergarten	3	3~5	
Elementary education	Elementary school	6	6~11	Compulsory education, free education*
Secondary education	Middle school	3	12~14	Compulsory education, free education*
	High school	3	15~17	Free education*
Higher education	College	4	Over 18	

* Free education-related subsidies: Admission fee, tuition fees, school operation support expenses, and curriculum book purchase costs

* If you fail to send your child to a compulsory education institution, you may be slapped with an administrative fine.

* You should pay the educational expenses of your child if he/she goes to a private elementary school, a private middle school, an autonomous private high school, a private self-purpose high school, or a specialized school (art, sports, international school, etc.).

School life in Korea

The first semester starts on the first weekday of March in most schools for public education in Korea. The detailed event schedule varies by school and school level.



Key educational events and activities

Event	Description	Schedule
Entrance ceremony (commencement of school work)	First day of a new semester, a new year	First weekday of March
Discretionary school holiday	School holiday autonomously decided by the school	To be determined by the school
School anniversary	To mark the school anniversary	To be determined by the school
Field trip	Field trip to a museum, a farm, etc.	Apr., Oct.
School sports day	School sports day for all students or by grade	May
Open class	Day when classes are open to parents	Apr.-May
Summer vacation ceremony	End of the first semester and beginning of summer vacation	Late Jul.
Opening ceremony of the second semester	End of summer vacation and first day of the second semester	Late Aug.
Winter vacation ceremony	Beginning of winter vacation	Late Dec.-Jan.
Last day of school (graduation)	Last day of the grade	Jan.-Feb.



Daily schedule : Regular class (elementary school: 40 minutes, middle school: 45 minutes, high school: 50 minutes) and breaks (10 minutes each)

Class	Time	Activity
1st period	09:10~09:50	Regular class
2nd period	10:00~10:40	Regular class
3rd period	10:50~11:30	Regular class
4th period	11:40~12:20	Regular class
Lunch break	12:20~13:10	Lunch and free time for play
5th period	13:10~13:50	Regular class
6th period	14:00~14:40	Regular class
After school	14:00~16:30	Care class, after-school class (On a request basis)

* An example of elementary school schedule. The school start time and daily schedule vary slightly by school and school level.

Korean school education for multicultural students

Support for entry into public education to guarantee fair educational opportunities

- Children and juveniles can enter and transfer to elementary and middle school regardless of their status of stay, nationality, race, etc.
- Some parents do not send their children to school out of fear of identification exposure. Unauthorized long-term stay to guarantee children's right to education is not subject to crackdown.

Support for preparation for school education



Steppingstone program

Support program for early adaptation to school life, provided for multicultural students who will enter or transfer to elementary or middle school

Provision of customized Korean language education and support for school learning



Korean language education and visiting Korean language education

Operates special classes for intensive Korean language education for multicultural students including immigrant children and foreign students who have just arrived in Korea



College student mentoring program

College students (mentors) help in multicultural preschoolers and students' (mentees) school life and studies.



Development and distribution of teaching aids

Teaching materials that explain key concepts and terms of courses easily to help in multicultural students' studies

Career education and emotional support



Support for the development of multilingualism benefits

Develops electronic multilingualism textbooks and holds a National Multilingual Speaking Contest to encourage multicultural students' multilingualism



Career education programs and mentoring

Operates student career education programs and online career mentoring (mentoring.career.go.kr), taking the characteristics of migrant juveniles into account



School life and emotional support

Provides the "Questionnaire for Screening of Emotional and Behavioral Characteristics" in different languages and cooperates with support institutions for multicultural children and juveniles in communities



I. Preparation for School Entrance

- 1. School Entrance Procedure 5
- 2. Documents Required for the School Enrollment of Students with Foreign Nationalities 6



II. Enrollment in School

- 1. Enrollment in Kindergarten 7
- 2. Enrollment in Elementary School 8
- 3. Enrollment in Middle School 10
- 4. Enrollment in High School 12



III. Support for School Education

- 1. Support for Preparation for School Education ... 13
- 2. Provision of Customized Korean Language Education and Support for School Learning 13
- 3. Career Education and Emotional Support 14



IV. Education Support Systems

- 1. Educational Subsidies 15
- 2. Support for School Life and Daily Life 17

- [Appendix 1] Terminology of School (Kindergarten) Life 18
- [Appendix 2] Videos on "Korean Educational Systems and Enrollment" for Parents 22
- [Appendix 3] Free Online Korean Language Education Websites 23



I

Preparation for School Entrance

1. School Entrance Procedure



Nationality of the Republic of Korea

Including multiple nationalities including the nationality of the Republic of Korea

Follow the same procedure as non-multicultural students.



Kindergarten

- Apply for admission via the Go First School website (www.go-firstschool.go.kr); successful applicants are selected. (Kindergarten application period: Oct.-Nov.)
 - Submit an application for admission to the head of the preferred kindergarten.
- * Applicants are selected according to the fixed number of students.



Elementary school

- An administrative institution sends a written notice to enroll to households.



Middle school

- Submit an application for admission to the student's current elementary school; students are then assigned to middle schools.
- * In case of specialized middle schools, visit their websites to check their admission processes.



High school

- Submit an application for admission to the student's current middle school; students are then assigned to high schools.
- * Check the admission processes of high schools via the High School Admission Information Portal (www.hischool.go.kr).



Foreign nationality

Including unregistered migrant children and refugees

Follow the school registration procedure for students with foreign nationalities.

- Submit an application for admission to the head of the preferred kindergarten.
- * Applicants are selected, not exceeding the fixed number of students.

- Submit an application for admission to the principal of a school in the school district where the student's residence is located.
- *Check your school district with the Office of Education.

- Submit an application for admission to the district office of education having jurisdiction over the student's residence or the principal of a middle school.

- Submit an application for admission to the head of the preferred high school.



The procedure above is for multicultural students who enroll in school for the first time in Korea. To select your child's school for admission or transfer, contact the school (district) office of education in the school district of your child's residence or a multicultural education support center first.

Admission Terminology (Reference)



Entrance : Entering the school (New admission as a first grader)

Admission : Enrolling as a student of a proper grade of a compulsory education school for the first time

Transfer: A person not subject to compulsory education who has interrupted his/her education re-enters his/her previous school as a student of the next grade or enters another school. (Cases where students not subject to compulsory education re-enter as a student of the same or lower grade of the elementary/middle school are deemed transfer.)

2. Documents Required for the School Enrollment of Students with Foreign Nationalities

01	Application for admission or transfer	<ul style="list-style-type: none"> Form provided by the school or office of education 	K ES MS HS
02	Certificate of entry and exit or certificate of alien registration	<ul style="list-style-type: none"> May be substituted with documents verifying the student's residence in Korea, such as written lease contract and letter of guarantee With the applicant's consent, the household register (resident register), abstract of resident registration, certificate of alien registration, etc. may be looked up by the school and district office of education without any document submissions. 	K ES MS HS
03	Transcript	<ul style="list-style-type: none"> Academic transcripts containing academic grades up to the highest or current grade 	ES MS HS
04	Certificate of enrollment, certificate of graduation (if applicable)	<ul style="list-style-type: none"> A document signed by the principal of the school, showing the date of enrollment/withdrawal and current grade 	ES MS HS
05	Student record (if applicable)	<ul style="list-style-type: none"> Submit if the child has attended a school in Korea before. 	ES MS HS
06	Certificate of immunization	<ul style="list-style-type: none"> The school may demand the relevant document under the Immunization Management of New Students and Transfer Students from Foreign Countries of the "Manual on Prevention and Crisis Response to Infectious Diseases for Students." 	ES MS HS
07	Other documents under the guidelines of the City/Do Office of Education	<ul style="list-style-type: none"> Documents must be confirmed by the competent Office of Education. 	ES MS HS
08	<ul style="list-style-type: none"> Apart from this, for educational purposes, some schools may demand a copy of passport, certificate of family relations, household register (resident register) (if the student has acquired the nationality of the Republic of Korea), etc. in order to check the student's information. 		K ES MS HS



- ☑ If the student's previous school is in the List of Accredited Foreign Elementary/Middle/High Schools of the Ministry of Education, Apostille verification or confirmation by the consul of an overseas diplomatic mission may be omitted and substituted with the documents issued by the principal of the school.
- ☑ Other documents issued by foreign schools require Apostille verification (countries that are party to the Apostille Convention) or confirmation by the consul of an overseas diplomatic mission of the Republic of Korea.
 - ※ The civil petitioner should prove that the school is a regular educational institution of the country (by submitting the list of accredited schools of the competent office of education of the country, etc.), or documents should be Apostille-verified or consul-confirmed, as hitherto.
- ☑ Documents proving the student's educational background should be sealed or signed by the principal of the school.
- ☑ Notarized translations should be attached to documents proving the student's educational background and which are written in languages other than Korean and English.
- ☑ Admission to the school may be canceled if any forgery or falsification is found from the documents submitted.



If it is difficult to prove the student's educational background, the Committee of Deliberation on Academic Backgrounds of Multicultural Students deliberates on matters regarding whether to accredit his/her educational background and grade determination.



II

Enrollment in School



1. Enrollment in Kindergarten



Types of kindergartens

National kindergartens

Kindergartens established and operated by the State

Public kindergartens

City/Do kindergartens established and operated by local governments

Private kindergartens

Kindergartens established and operated by juristic persons or private individuals



Children eligible for admission and timing for admission

- 3~5-year-old **preschoolers** enter kindergarten.
- Submit an application for admission via **Go First School** in October and November. Aside from this period, admission may be accepted according to the fixed number of students.



Enrollment procedure

All procedures including application submission and registration are conducted through the kindergarten enrollment management system **Go First School** (www.go-firstschool.go.kr).

Early recruitment*

Receipt of submissions for applications

Selection and announcement

Registration

General recruitment

Early receipt of submissions for applications

Regular receipt of submissions for applications

Result announcement

Registration

Waiting list management

Additional recruitment

Submission of applications and registration

*Early recruitment

- See the recruitment guide of the kindergarten to find out whether your child is eligible for early recruitment.
- Children eligible for early recruitment must submit evidentiary documents to the kindergarten and get confirmation.

- Aside from the period of preschooler recruitment via **Go First School**, you should submit an application for admission to the kindergarten in person. Your child may be accepted when the kindergarten has a vacancy.



How to use Go First School



Curriculum planning and operation


- **Daily schedule** : Divided into the regular programs (4~5 hours per day) and after-school programs (after the regular program). Daily schedule may vary by kindergarten.


Example of daily schedule


Category	Time	Activity description
Regular programs	09:00~13:00	Arrive at the kindergarten, free time (play), snack, play outdoors, lunch, activities
After-school programs	13:00~18:00	Break/Nap, afternoon snack, specialized programs, special activities, free time (play), play outdoors



2. Enrollment in Elementary School

 **Types of elementary schools**

 **Children eligible for admission and timing for admission**

 **Enrollment procedure**

National elementary schools

Elementary schools established and operated by the State and elementary schools attached to teachers' colleges and colleges of education of national universities

Public elementary schools

City/Do elementary schools established and operated by local governments

Private elementary schools

Elementary schools established and operated by juristic persons or private individuals

- Every guardian should send children under his or her care to an elementary school from March 1 of the year following the year where the date they reach six years of age falls. Elementary school is compulsory and free education. Parents failing to send their children to school may be slapped with an administrative fine.

In Korea, enrollment in an elementary school proceeds as shown below.



- Generally, students are assigned to school based on their places of residence. Children from multicultural families may be admitted to elementary schools that have established special classes for multicultural students (Korean language education).
 - Parents of children wishing to enter school early or defer admission should file an application for early admission or admission deferral with the competent Eup/Myeon/Dong Community Center in person between October 1 and December 31 every year.
- * Children's early admission and deferred admission are determined by parents. Consider carefully before filing an application.

Multicultural students' admission to elementary school

- A written notice to enroll is not issued to children of foreign parents even though they were born in Korea. Visit a nearby elementary school with documents verifying your child's residence in Korea and inquire about admission.
- Unregistered migrant children can enroll in school. They should submit documents verifying their residence in Korea and date of birth, such as written lease contract and letter of guarantee.



Information
about
school life



Class

- **Class hours** : Four or five periods per day / 40-minute class
- **Curriculum** : Regular curriculum, creative activities

Subjects (Courses)

First and second grades | Korean Language, Mathematics, and Integrated Course
(Disciplined Life, Intelligent Life, and Pleasant Life)

Third and fourth grades | Korean Language, Moral Education, Social Studies, Mathematics, Science, Physical Education, Music, Fine Arts, and English

Fifth and sixth grades | Korean Language, Moral Education, Social Studies, Mathematics, Science, Practical Arts, Physical Education, Music, Fine Arts, and English

Creative activities

Extracurricular activities to acquire basic lifestyle habits required for community life and find students' own individualities and aptitudes. No textbook is required.



After-school class

- School's educational activities other than regular classes, consistently provided for a certain period of time according to the school's plan
- **For whom** : Students attending the school and who want to participate in after-school class
- **Place for class** : School and various community facilities
- **Period and schedule** : After-school class hours during a semester (Some programs may operate on Saturday or during vacation.)
- **Programs** : Programs to develop students' aptitude and special ability such as cooperation with communities, educational donation, etc.
- **Learning management** : The school provides the student's learning process or result and holds an open class day.

* Programs and schedules are determined according to the school's after-school class operation plan. You will receive a notice about after-school class in the beginning of the semester. Check the available programs, fees, and schedules, including whether your child is eligible for subsidies, through the notice. If you want to get your child in a program, sign up for the program. (Application methods vary depending on the school.) Your child may attend a preview lesson first before making a decision.



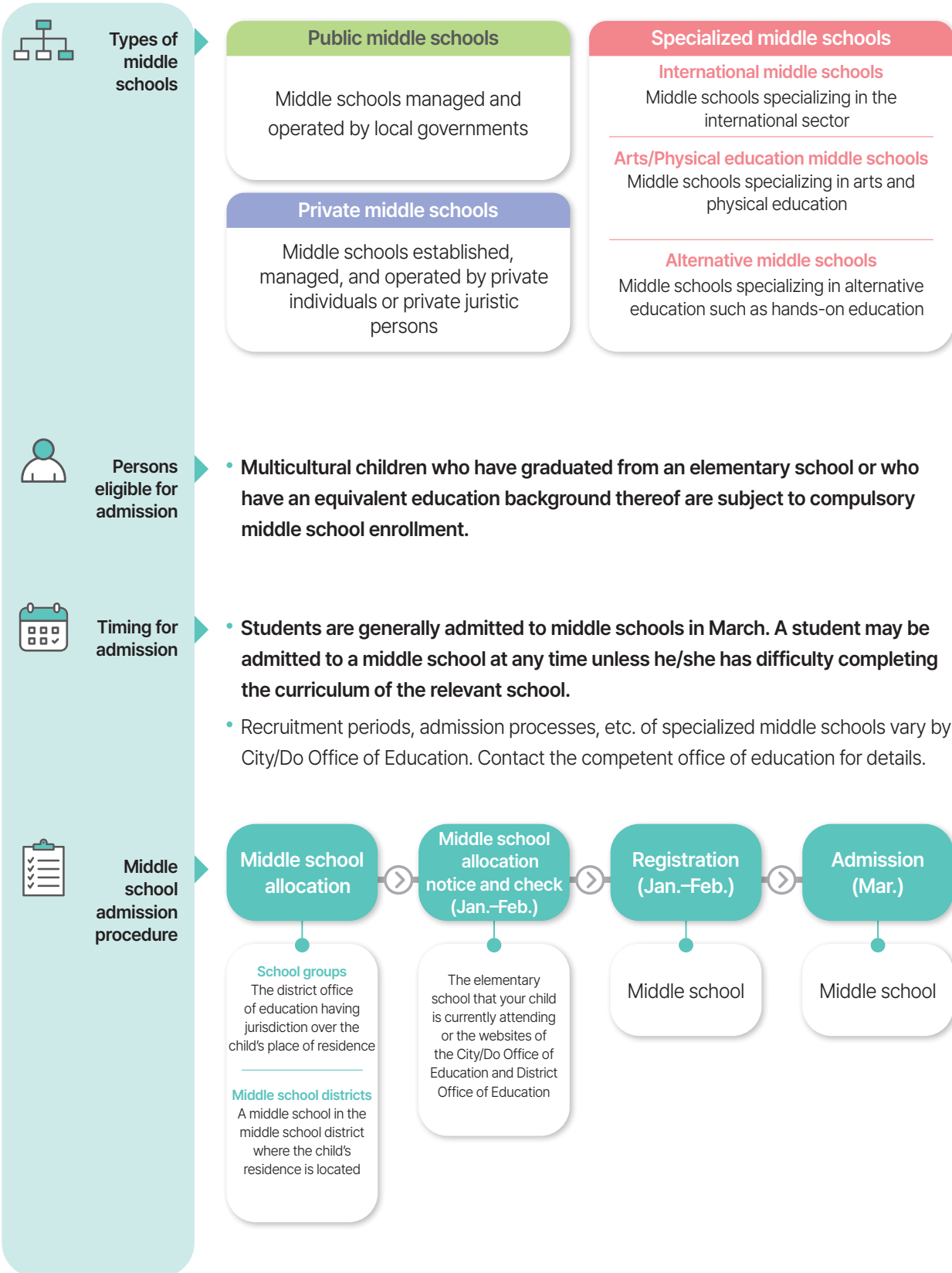
Elementary care class

- Program to take care of elementary school students after school in a designated school classroom
- **For whom** : Elementary school students from families who need care services, such as double-income families, low-income families, and single-parent families
- **Operating institution** : Elementary schools with care class
- **Details** : Individual activities (writing, reading, etc.), Group activities (aptitude development programs, etc.)

* Operation hours and application methods vary according to the school's circumstances and students' demand. Contact an elementary school with care class or visit Government 24 (www.gov.kr) for further information.



3. Enrollment in Middle School





Middle school life



- ☑ After selecting a middle school, the parent should submit an allocation form for the middle school in the second semester (October) of sixth grade of elementary school.
- ☑ Schools are allocated for students through sorting according to districts and school groups; for districts that are extremely distant and which lack transportation facilities for students to go to school, schools are allocated according to the middle school districts set by the superintendent of education.
- ☑ **Children from multicultural families may be admitted to middle schools that have set up special classes for multicultural students.**



Class

Unlike elementary schools operated with the full-time class teacher system, middle schools are operated on the basis of a combination of **the class teacher system and the departmental system.**

- **Class hours** : Six or seven periods (45 minutes' class)
- **Academic grading** : The results of written tests and performance tests are reflected to the general record.
 - ※ During a free learning semester, common written tests such as midterms and final exams are not conducted. Process-centric evaluations focusing on students' learning and growth are conducted instead.
- **Curriculum** : Regular curriculum + Creative activities

Subjects (Courses)

Korean Language, Social Studies (including history)/Moral Education, Mathematics, Science/Technology & Home Economics/Information, Physical Education, Art (Music/Fine Arts), English, and elective courses (Chinese Characters, Environment, Practical Foreign Languages, Health, Career & Jobs, etc.)

Creative activities

Autonomous activities, club activities, volunteer work, and career activities



Free learning semester program

- Middle school operates types of classes to encourage student participation and curricula for experiential activities for various types of experiences to develop students' talent and aptitude during one or two semesters, instead of providing knowledge and competition-centric education.
 - ※ Activities during the free learning semester: Career search activities, theme selection activities, club activities, art/sports activities, etc.



4. Enrollment in High School



Types of high schools

General high schools General high schools making up the largest part						
Sub-category	Provide secondary education based on the education provided in middle schools					
Admission process	Standardized regions : Schools are allocated through sorting after selecting students based on their academic performances. Non-standardized regions : Each school selects students based on their academic performances, etc.					
Special-purpose high schools High schools that provide education specializing in a specific field						
Sub-category	Foreign language high schools Foster experts proficient in foreign languages	International high schools Foster experts in international relations	Science high schools Train talents in science	Arts high schools Train artists	Physical education high schools Train athletes	High school tailored to industry demand (Meister high schools) Provide tailored curricula directly connected to the demand of the industry
Admission process	Each school selects students through the self-learning screening process (academic performances, interview, etc.).			Each school selects students through academic performance evaluation, interview, practical test, etc.		
Specialized high schools Vocational high schools : Education aiming at training talents in a specific field for students having similar temperament, aptitude, and abilities Alternative high schools : Specialized experience-oriented education such as field training in nature						
Sub-category	Vocational high schools Provide vocational training for students who want to get a job after graduation			Alternative specialized high school Operates autonomous alternative educational programs focusing on students		
Admission process	Each school selects students through academic performance evaluation, interview, etc.					
Autonomous high school High schools that may operate schools or curricula with a certain degree of autonomy						
Sub-category	Autonomous private high schools Autonomously operate schools or curricula based on their founding philosophy			Autonomous public high schools Autonomously operate schools or curricula		
Admission process	Seoul : 1st stage: sorting, 2nd stage: interview * Except Hana Academy Seoul Other regions : Each school selects students through the self-learning screening process (academic performances, interview, etc.).			Standardized regions : Schools are allocated through sorting after selecting students based on their academic performances. Non-standardized regions : Each school selects students based on their academic performances, etc.		

* Visit the High School Admission Information Portal (www.hischool.go.kr) and the Specialized/Meister High School Portal (www.hifive.go.kr) for further information.



Persons eligible for admission

- Multicultural children who have graduated from a middle school or who have an equivalent educational background thereof are eligible for high school enrollment.



Selection of students and timing for admission

- Refer to the Master Plan for High School Admission Processes of the competent City/Do Office of Education for further details. (You can see the master plan via the website of the City/Do Office of Education from April.)
- The time for selecting new high school students is divided into the first term and the second term.
 - First term** General high schools (art/physical education), special-purpose high schools (science/arts/physical education high schools, high schools tailored to industry demand)
 - Second term** High schools not included in the first term, such as general high schools (except art/physical education), special-purpose high schools (foreign languages/international), autonomous (public/private) high schools, etc.
- Recruitment periods, admission processes, etc. vary by City/Do Office of Education. Contact the competent office of education for details.



III

Support for School Education

1. Support for Preparation for School Education



Steppingstone program
(City/Do Office of Education)

- A preparatory education program to help children from multicultural families and who are expected to enter elementary/middle school adapt to school

! Schools operating the steppingstone program are designated every year.

Elementary school Educational contents are divided into everyday life and study.

Middle school Educational contents are divided into peer group culture-based communication and experience/activity-based school life.

2. Provision of Customized Korean Language Education and Support for School Learning



Korean language education and visiting Korean language education
(City/Do Office of Education)

- Special classes for intensive Korean language education are set up and operated for immigrant children and foreign students who have just arrived in Korea. If children enter or transfer to a school not operating the Korean language education program, "Visiting Korean Language Education" is provided.

Kindergartens If a kindergarten has many foreign preschoolers having difficulty communicating in Korean, the curriculum-associated play-oriented Korean language education is intensively provided.

Elementary/Middle schools Special classes for intensive Korean language/culture education are set up to provide the KSL (Korean as second language) Program tailored to each student.



Mentoring by college students
(City/Do Office of Education, Korea Student Aid Foundation)

- College students (mentors) help multicultural preschoolers and students (mentees) adapt to school life by helping in their studies and through one-to-one psychological and mental counseling.



Development and distribution of teaching aids
(National Center for Multicultural Education)

- Books that clearly explain concepts and terms frequently used in the curriculum in order to help in multicultural students' studies. Contents are provided in various media forms such as QR codes and videos.

3. Career Education and Emotional Support



- Develops and provides electronic multilingualism textbooks via website and application to encourage multicultural students' multilingualism
- Holds a National Multilingual Speaking Contest to encourage the multilingualism of multicultural students and promote their self-confidence



- Operates career education programs, taking the characteristics of multicultural students into account

01

[Career counseling of Career Net]
– In-depth counseling tailored to multicultural students

02

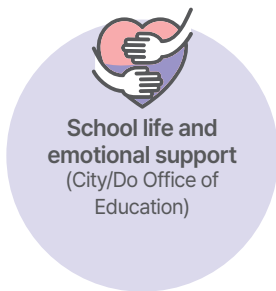
[Career education videos of Career Net]
– The career exploration program "What a Job!" introduces multicultural persons working in different fields in Korea through video contents with multilingual subtitles (Chinese and Vietnamese).

03

The career newsletter for parents, "Dream Letter," is provided in multiple languages (English, Chinese, Vietnamese, and Russian; visit parents.go.kr (Parents Onnuri) to access.)

- Naturalized experts working in Korea are selected as mentors, and their online mentoring (mentoring.career.go.kr) is provided for all students including multicultural students.

Each city/province provides customized career camp programs. Contact the city/province for further details.



- Helps in multicultural students' emotional/behavioral development by providing the "Questionnaire for Screening of Emotional and Behavioral Characteristics" in multiple languages (10 languages: English, Chinese, Japanese, Vietnamese, Filipino, Russian, Mongolian, Arabic, Khmer, and Thai)
- Strengthens the relevant support for students who need emotional support, in cooperation with support institutions for multicultural students in communities



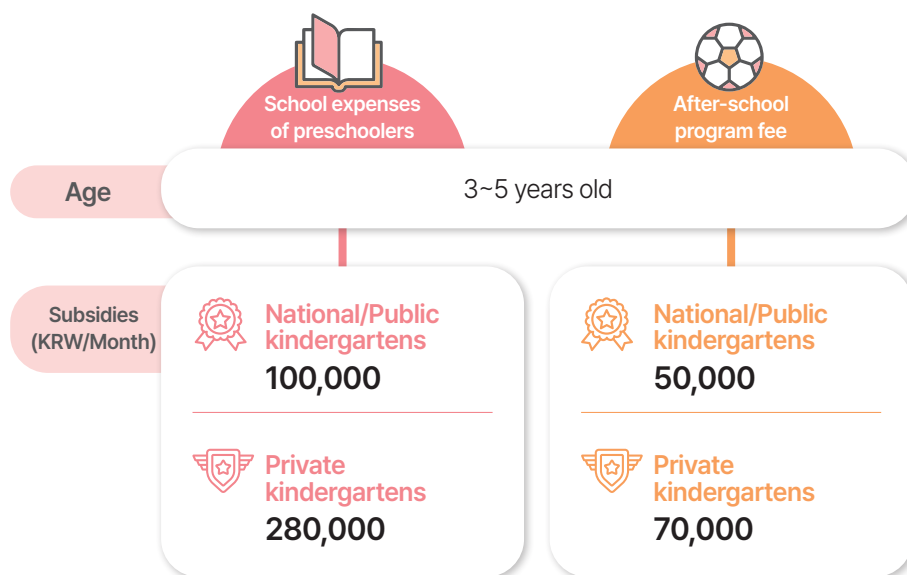
IV

Education Support Systems

1. Educational Subsidies



Educational subsidies for preschoolers



As of Mar. 1, 2022



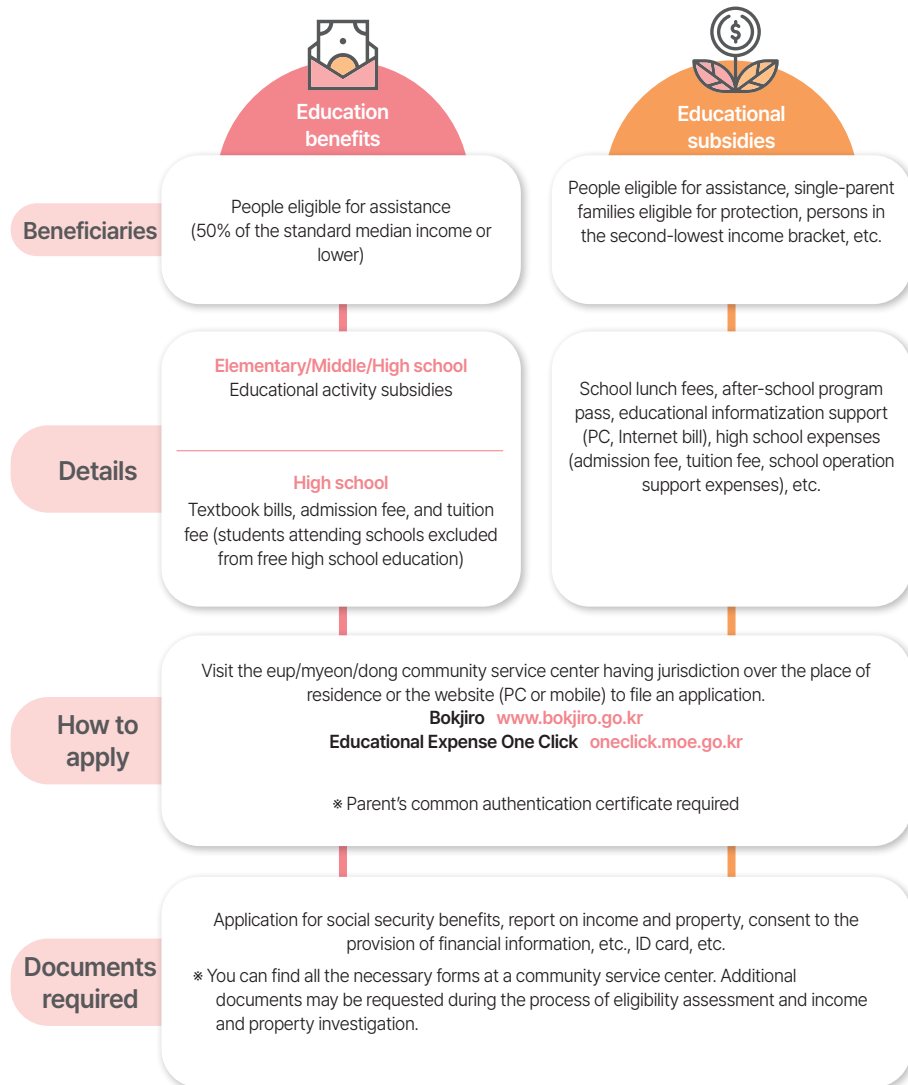
Subsidies may vary by city and province. Contact the community service center having jurisdiction over your child's place of residence for further details.

- Subsidies for school expenses are provided for all preschoolers (3~5 years of age) attending a kindergarten regardless of income level. Subsidies are provided only for three years right before they enroll in an elementary school.
 - * Preschoolers with foreign nationalities are not eligible for subsidies. (Special contributors, etc., recognized by the Minister of Justice under the Framework Act on the Treatment of Foreigners Residing in the Republic of Korea may be eligible for subsidies.)
- An additional subsidy of up to KRW 150,000 per month is provided for preschoolers from legal low-income families (people eligible for assistance, second-lowest income bracket, or single-parent families) and who are currently attending a private kindergarten, provided they meet the eligibility requirements for provision of educational subsidies for preschoolers*
 - * Including preschoolers of early admission, deferred admission, etc.
- Visit the eup/myeon/dong community service center having jurisdiction over the parent's (guardian's) place of residence or the Bokjiro website (www.bokjiro.go.kr) to apply for subsidies.



Provision of educational subsidies/education benefits for children from low-income families

- Children from low-income families are eligible for “educational subsidies” covering school expenses and school lunch fees and “education benefits” including educational activity subsidies. Visit the eup/myeon/dong community service center having jurisdiction over the parent’s (guardian’s) place of residence to file an application.



For more information

Health & Welfare Counseling Center 129
 Central Counseling Center for Educational Expenses 1544-9654
 Eup/Myeon/Dong community service centers, schools, and offices of education

2. Support for School Life and Daily Life



Wee Class (School counseling center)

- As a counseling center set up in each school, Wee Class provides one-stop services covering diagnosis, counseling, and treatment for students who have difficulty adapting to school, at-risk students, and students who need counseling. Wee Class operates to help students adapt to home, school, and society. In addition, it helps students understand and overcome their cognitive, emotional, and behavioral issues.



* Students attending schools without a Wee Class can apply for the Visiting Wee Center Counseling Service. (A qualified counseling teacher stays at the counseling center full time. Students can visit Wee Class and get counseling when they experience any psychological or mental difficulties.)



Multicultural Family Support Center

- Multicultural Family Support Centers provide family relationship enhancement education (family, gender equality, human rights, etc.), Korean language education, visiting education, counseling, information, translation service for immigrants by marriage, and language development support service for children in order to help multicultural families adapt to Korean society. Currently, 228 centers are operating in Korea.



Migrant Background Youth Support Foundation

- The Migrant Background Youth Support Foundation helps juveniles with migrant backgrounds (North Korean adolescent refugees, immigrant juveniles, and multicultural juveniles). The foundation provides a variety of programs associated with basic information about Korean society, Korean language education, social relationship enhancement, etc. in order to help juveniles with migrant backgrounds develop their social learning ability and self-reliance.



Seoul On Dream Education Center

- An education center for immigrant children who may be left out from various educational benefits. It helps in immigrant children's adaptation to Korean society through Korean language education, career education, and vocational education.



Korean language education, understanding of Korean society, specialized services (naturalization preparation class, vocational class, school qualification exam class, middle and high school class, college admission class, etc.), cultural experience, mentoring, counseling service, etc.



Danuri Call Center



1577-1366

- The Danuri Call Center provides Korean practical information, emergency counseling and support, practical interpretation, and three-party interpretation services for multicultural women and immigrant women residing in Korea.
- Services are provided in 13 different languages. A client can talk in her mother language to a counselor who is also an immigrant woman from the client's country.

* All counseling sessions and the client's identification are confidential.

Support details

- Operation of emergency shelters
- Emergency and violence damage counseling and link to emergency support
- Provision of practical information
- Practical interpretation and three-party phone interpretation (legal counseling in cooperation with the Korean Bar Association)



Appendix 1

Terminology of School (Kindergarten) Life

※ The terms below may vary depending on the region and school (institution).



Common terms

Terms	Description	Notes
Administrative office	Takes care of the school's (kindergarten's) financial affairs and manages incomings and outgoings such as educational expenses, experiential activity expenses, etc.	
School Banking (CSM)	(School Banking) Educational expenses (field trip expense, etc.) are automatically transferred from the parents' bank accounts to the school's (kindergarten's) account.	
Entrance ceremony	The ceremony for new students of the school (kindergarten)	
Parents	Guardians of students (preschoolers), such as father and mother	
Parent counseling	A parent and the class teacher meet in person, ask each other some questions about the student's (preschooler's) school (kindergarten) life, and discuss how to solve the student's problems.	
Open class for parents	Parents are invited to the school (kindergarten) for an open class.	
Letter to parents	A letter sent by the school (kindergarten) to parents to inform them of educational activities, school events, information, etc.	
Vacation	Any of the periods during which schools (kindergartens) are closed for a certain period of time at the end of the semester or year. Summer vacation is provided when it is hot, and winter vacation, when it is cold. (Summer vacation, winter vacation, school year-end vacation, etc.)	
Opening ceremony of the school term	Ceremony held when the regular class period starts after vacation ends	
Graduation ceremony	Awarding of a diploma to students (preschoolers) who have completed schooling in accordance with the relevant regulations	Kindergartens included
School lunch	Meals provided to students (infants) at school (kindergarten)	
After-school programs	Educational activities provided after the regular class schedule and all care activities provided by the school (kindergarten)	
After-school program instructors	Teachers operating and teaching after-school programs	
Field trip	Students visit a specific place to learn through experiential activities (e.g., field trip programs by grade, pottery making, farm experience, etc.). (e.g., experiential classes, school trip, job experience, etc.)	
Out-of-school activities	Experiential classes held after obtaining approval from the principal of the school according to a private plan, generally direct experiential activities such as field trip, cultural experience, and job experience (e.g., cultural field trip, commissioned education, family trip, visit to relatives, filial duty experience, etc.)	
School sports day	Students (preschoolers) participate in competitive sporting activities all together.	
School (Kindergarten) anniversary	Day to mark the anniversary of the school (kindergarten)	
Discretionary school holiday	School holiday or short school break period determined at the discretion of the school (kindergarten)	



Terms	Description	Notes
Parents' meeting	The school introduces its educational activities to parents, and parents discuss matters regarding the operation of the school. (Curriculum briefing)	
Teacher competency assessment (Parents' satisfaction survey)	Online survey to assess parents' satisfaction with the principal (head), vice-principal (vice-head), and teachers of the school (kindergarten)	
School (Kindergarten) operation committee	Organization consisting of the school's (kindergarten's) teacher representatives and parent representatives, deliberates and advises on matters regarding educational activities	
Week	Time unit equal to seven days from Monday to Sunday	
Semester	Academic term that divides an academic year as necessary. Generally divided into two semesters, from March to August and from September to February	
Transfer	Moving from the current school to another	
Student record	Document about continuous records regarding the student's (preschooler's) school (kindergarten) life and physical, intellectual, affective, and social development	Kindergartens included
Absence acknowledged as attendance	Absence due to a family member's marriage or death, legal infectious diseases, experiential classes accompanied by a family member, etc.	
Weekly note	Note containing the week's schedule, things to bring, class events, and class teacher's comment	
Consent to utilization of personal information	Document to get parents' consent to the utilization of students' (preschoolers') personal information by the school (kindergarten)	
Physical examination	Checks the students' physical development and health conditions by measuring the students' height, body weight, etc.	
School art festival	Educational event participated in by the students such as exhibition, art performance, contest, etc.	
Ceremony for the last day of school	Ceremony held to mark the completion of an academic year	
Courses	Subjects provided by the school	
Textbooks	Books of school courses	
Performance test	Evaluates students' own outputs or learning progress in various ways (essay, discussion/debate, experiment/practice, observation, self-assessment/peer assessment, etc.) in order to check the acquisition of knowledge, function, attitude, etc.	
Creative activities	Extracurricular activities consisting of autonomous activities, club activities, volunteer work, and career activities	Kindergartens not included
Self-learning	A form of learning wherein learners select and determine all learning processes, including participation, learning objective setting, learning program selection, and result evaluation, based on their own will	
Student council	Autonomous group consisting of student representatives collecting students' opinion about school life and discussing, determining, and executing the relevant matters	
Volunteer work	Either the school or individual students serve the community or provide volunteer work for public interest.	



Appendix 1 Terminology of School (Kindergarten) Life

Terms	Description	Notes
School notice	A student writes down the school teacher's announcements about the school or class on his/her notebook and brings it home.	
Class election	Class representatives (president, vice-president) are selected through an election.	
School trip	An outdoor education trip that lasts several days, accompanied by the school teacher. It is a type of experiential class wherein students see, experience, and feel nature and culture in person.	
Weekly duty (class assistant)	A student who serves the class for a week	Kindergartens not included
Class meeting	Class members' meeting held during regular class hours	
School library card	Card used to borrow books at the school library	
School police officer	Each school has its own school police officers who provide school violence prevention education for students and parents and make efforts to prevent and eradicate school violence.	



Kindergarten life

Terms	Description
Preschoolers	Children attending a kindergarten, from three years of age up to right before their first enrollment at an elementary school (generally five years of age)
Going to kindergarten	Preschoolers go to the kindergarten and starts a day.
Returning home from school	Preschoolers go home after completing the daily educational activities at the kindergarten.
Play	Indoor and outdoor activities provided according to preschoolers' interests
Morning/Evening/All-day care	Care activities are provided for preschoolers from double-income families, single-parent families, etc. who need care services. Care services are provided in the morning and evening during the after-school program hours. (Care service hours may vary by kindergarten.)
Head of kindergarten	Administrator responsible for the operation of the kindergarten
Vice head of kindergarten	Middle manager who assists the head in operating the kindergarten
Completion ceremony	Ceremony held to mark the completion of an academic year in kindergarten
Kindergarten expenses	Educational expenses such as tuition fees and other payments for childhood education
Recruitment of preschoolers	Process that preschoolers go through to enter a kindergarten, including submission of application, sorting, and registration
Orientation	Day when the kindergarten introduces its curriculum, events, etc. to new students' parents
Health examination for preschoolers	Medical examination to check the health conditions of infants and preschoolers (4 months old to 60 months old)
Specialized programs	After-school programs provided by external instructors and paid by beneficiaries



Elementary school life

Terms	Description
School report	Document about the student's general school life information (attendance, academic development progress, etc.), generally distributed at the end of each semester
Medical examination	Physical examination conducted by a hospital designated by the school for first and fourth graders to check their health conditions and prevent diseases
Oral examination	Examination conducted by a hospital designated by the school for second, third, fifth, and sixth graders to check their dental conditions and prevent diseases
School presidential election	Students elect their representatives (president, vice-president).
Outdoor field trip	Outdoor activity to train students' body and mind in nature such as mountain, sea, etc.



Middle/High school life

Terms	Description
Academic performance	General result of school life (results of school examinations, performance tests, written tests, etc.)
Practical test	Art, music, and physical education tests such as painting, playing a musical instrument, long jump, and running
English listening test	The English listening test is jointly administered by 17 City/Do Offices of Education twice a year. The result may be included in the English performance test result.
Midterm examination	Examination administered in the middle of an academic term
Final examination	Examination administered at the end of an academic term
Mock test	Practice exam administered in preparation for the College Scholastic Ability Test. Not included in the academic performance results.
Regular admission	Takes place based on the announced results of the College Scholastic Ability Test
Special admission	Takes place based on students' high school academic performances, school life evaluation results, etc.
Club activity (C.A.)	Activity done by students who share the same interest and hobby during regular class hours
Autonomous club	Group activity done after school by students who share the same interest and hobby
Class in special classroom	Special classrooms (art classroom, English classroom, science classroom, etc.) for specific subjects
Free learning semester program	One- or two-semester career education program for middle school students wherein they have discussion or practical classes or job experience activities without taking the midterm or final exam
School violence	Any action committed against students inside or outside school premises resulting in physical or mental injury, assault, confinement, threat, kidnapping, abduction, defamation, insult, extortion, coercion, forced errand, sexual violence, bullying, stalking, cyber-bullying, or mental, physical, or property damage from obscene or violent information via an information and communications network



Appendix 2

Videos on “Korean Educational Systems and Enrollment” for Parents



Videos on **Korean Educational Systems and Enrollment** provide school information for multicultural parents with preschool, elementary school, and middle school children. Videos consist of six parts (around 20 minutes per part).



The contents provide information about Korean educational systems and comprehensive school life information including admission to and graduation from elementary school. You can watch the videos via the **Multicultural Education Portal** (edu4mc.or.kr), **Prime College Lifelong Education Hub Course** (hub.knou.ac.kr), and **Multicultural Family Support Portal Danuri** (liveinkorea.kr).



Videos are recorded in Korean with subtitles in five different languages (Russian, Vietnamese, English, Japanese, and Chinese).



Elementary school

Keywords

01	Let us learn about schools in Korea.	Daycare center, kindergarten, elementary/middle/high school, educational institutions of college, compulsory education
02	What should I do for my child's admission to elementary school?	Written notice to enroll, orientation day, care class, after-school programs, letter to parents
03	What do elementary school students do every day at school? What is their annual schedule?	Major events, academic courses, class hours, school lunch, onsite experiential classes, summer vacation, school sports day, short vacation
04	How can I guide my child in his/her school life?	Life guidance, school supplies, school notice, safe commute to school, accident prevention
05	How can I help in my child's homework and studies?	Study guidance, types of homework, dictation, keeping a diary, reading books, performance test
06	What happens after graduation from elementary school? (Career path and further education information for children)	Curricula after graduating from elementary school, aptitude, going on to next-level school, career, jobs, licenses, license acquisition information



Middle school

01	Let us learn about middle school in Korea.	02	Middle school student's daily routine in school and curriculum for one year
03	How can I guide my child during his/her adolescence?	04	How can I help in my child's studies?
05	What is the free learning semester program?	06	My child is now a high school student



PM2022-60

School Entrance Information for Multicultural Parents

How to Start School in Korea

Date of issuance	September 2022
Publisher	Kang Dae-jung (President)
Publishing office	National Institute for Lifelong Education
Editors	Kim Gwi-hyeon (Chungcheongbuk-do Office of Education) Na Ae-ran (Gwangju Metropolitan Office of Education) An Seo-yeong (Yeoulnuri Kindergarten)
Joint researchers	Yun Yi-ji (Ministry of Education), Chu Yeong-ju (National Center for Multi-cultural Education)
Address	9F, National Institute for Lifelong Education, 14 Cheonggyecheon-ro, Jung-gu, Seoul (Postal code) 04520
Telephone	02-3780-9834
Fax	02-3780-9939
Website	National Institute for Lifelong Education (www.nile.or.kr) National Center for Multi-cultural Education (www.edu4mc.or.kr)
Design & Translation	DoubleKnew Company

* The copyright to the content of this material is owned by the Ministry of Education, National Institute for Lifelong Education, and the Office of Education of 17 cities and provinces as the agents of consignment.

* Any redistribution or reproduction of all or part of the contents is strictly prohibited.